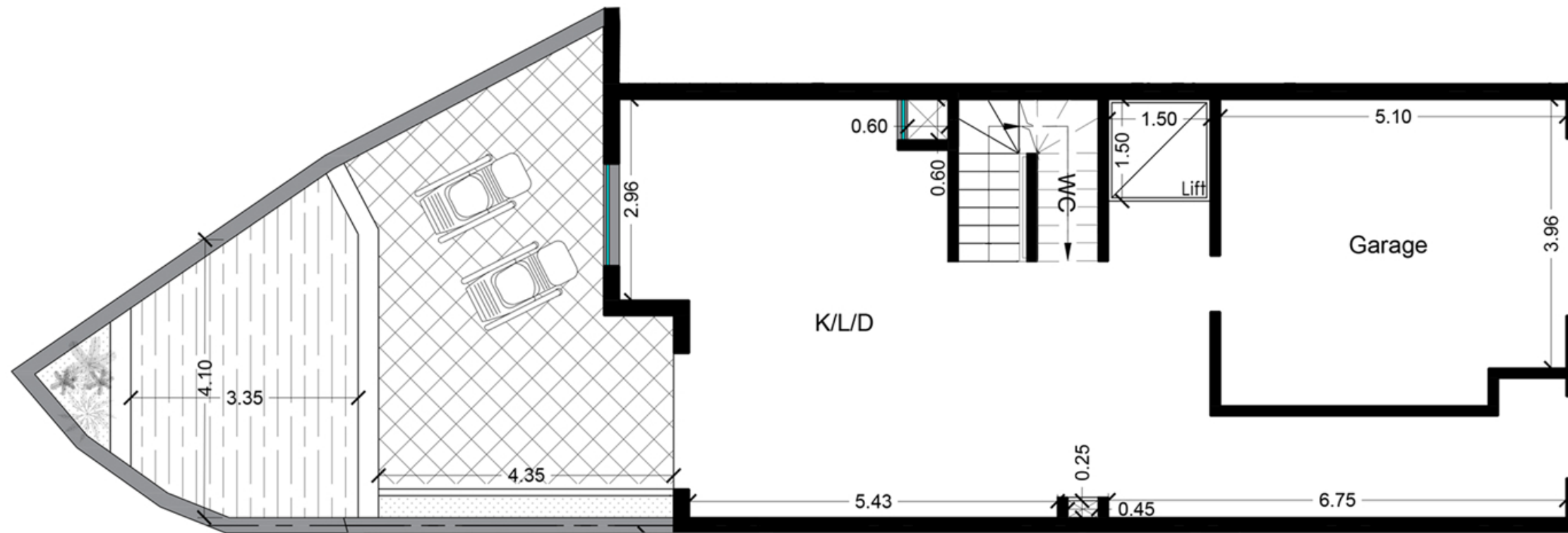


Misrah l-Inbid

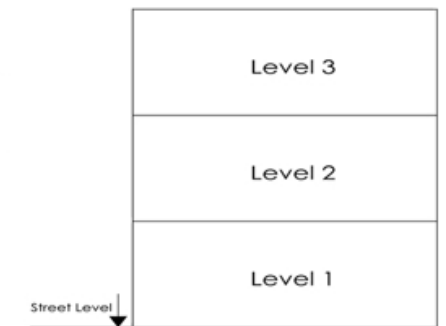
Xewkija



SCALE 1 : 100



SCALE 1 : 100



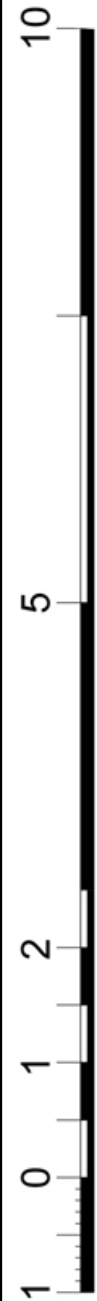
Plot 17
Ground Floor (Level 1)

Artistic Impressions only
Beams may protrude. Minimum
internal height under beam is 2.1m

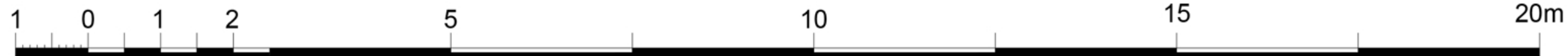
Internal : 88 m² External : 45 m²
Total Area : 133 m²

Misrah l-Inbid

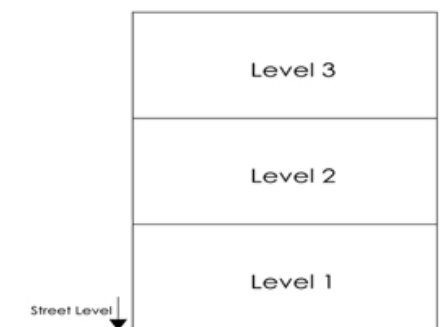
Xewkija



SCALE 1 : 1 0 0



SCALE 1 : 1 0 0



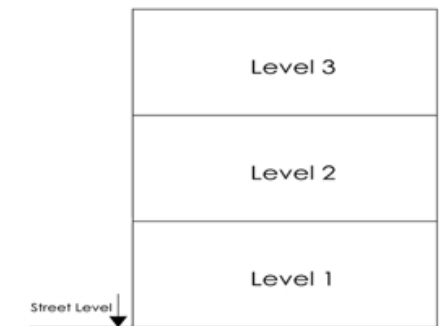
Plot 17
First Floor (Level 2)

Artistic Impressions only
Beams may protrude. Minimum
internal height under beam is 2.1m

Internal : 82 m² External : 10 m²
Total Area : 92 m²

Misrah l-Inbid

Xewkija



SCALE 1 : 100



SCALE 1 : 100

Plot 17
Second Floor (Level 3)

Artistic Impressions only
Beams may protrude. Minimum
internal height under beam is 2.1m

Internal : 54 m² External : 36 m²
Total Area : 90 m²